

RADIATOR VALVE



THERMOSTAT ADAPTABLE VALVE AND LOCKSHIELD VALVE

**Thermostat adaptable valve 1178SN**

Nickel-plated thermostat adaptable valve. Angle body. Connection for copper or plastic pipe, size 1/2" M. Standard tailpiece. ABS hand wheel with movable stem. Compatible with thermostatic actuators series 148 and electrothermic actuators 22C.

* Available with O-ring sealed straight tailpiece.

Article number	Size	Size tube	Kvs	Unit
1178SN38X	3/8"	1/2"	2,6	10
1178SN12	1/2"	1/2"	2,6	10
1178UMSN38X*	3/8"	1/2"	2,6	10
1178UMSN12*	1/2"	1/2"	2,6	10

**Thermostat adaptable valve with presetting 1188UM**

Nickel-plated thermostat adaptable valve with presetting. Angle body. Connection for copper or plastic pipe, size 1/2" M. Standard tailpiece. ABS hand wheel with fixed stem.

Compatible with thermostatic actuators series 148 and electrothermic actuators 22C.

Article number	Size	Size tube	Kvs	Unit
1188UMSN38X	3/8"	1/2"	2,6	10
1188UMSN12	1/2"	1/2"	2,6	10

**Thermostat adaptable valve with presetting 1130UM**

Nickel-plated thermostat adaptable valve with presetting. Angle body. Connection for copper or plastic pipe, size 1/2" M. Standard tailpiece. ABS hand wheel with fixed stem.

With easily removable protective cap to allow installation of thermal commands series 148 and electrothermic actuators 22C.

Article number	Size	Size tube	Kvs	Unit
1130UMSN38X	3/8"	1/2"	2,6	10
1130UMSN12	1/2"	1/2"	2,6	10

**Balancing lockshield valve 1195SN**

Nickel-plated balancing lockshield valve. Angle body. Connection for copper or plastic pipe, size 1/2" M. Standard tailpiece. ABS cap.

* Available with O-ring sealed straight tailpiece.

Article number	Size	Size tube	Kvs	Unit
1195SN38X	3/8"	1/2"	2,3	10
1195SN12	1/2"	1/2"	2,3	10
1195UMSN38X*	3/8"	1/2"	2,3	10
1195UMSN12*	1/2"	1/2"	2,3	10

**Thermostat adaptable valve 1179SN**

Nickel-plated thermostat adaptable valve. Straight body. Connection for copper or plastic pipe, size 1/2" M. Standard tailpiece. ABS hand wheel with movable stem. Compatible with thermostatic actuators series 148 and electrothermic actuators 22C.

* Available with O-ring sealed straight tailpiece.

Article number	Size	Size tube	Kvs	Unit
1179SN38X	3/8"	1/2"	1,8	10
1179SN12	1/2"	1/2"	1,8	10
1179UMSN38X*	3/8"	1/2"	1,8	10
1179UMSN12*	1/2"	1/2"	1,8	10

THERMOSTAT ADAPTABLE VALVE AND LOCKSHIELD VALVE

Thermostat adaptable valve with presetting 1189UM

Nickel-plated thermostat adaptable valve with presetting. Straight body. Connection for copper or plastic pipe, size 1/2" M. Standard tailpiece. ABS hand wheel with fixed stem. Compatible with thermostatic actuators series 148 and electrothermic actuators 22C.

Article number	Size	Size tube	Kvs	Unit
1189UMSN38X	3/8"	1/2"	1,8	10
1189UMSN12	1/2"	1/2"	1,8	10


Thermostat adaptable valve with presetting 1131UM

Nickel-plated thermostat adaptable valve with presetting. Straight body. Connection for copper or plastic pipe, size 1/2" M. Standard tailpiece. ABS hand wheel with fixed stem. With easily removable protective cap to allow installation of thermal commands series 148 and electrothermic actuators 22C.

Article number	Size	Size tube	Kvs	Unit
1131UMSN38X	3/8"	1/2"	1,8	10
1131UMSN12	1/2"	1/2"	1,8	10


Balancing lockshield valve 1196SN

Nickel-plated balancing lockshield valve. Straight body. Connection for copper or plastic pipe, size 1/2" M. Standard tailpiece. ABS cap.

* Available with O-ring sealed straight tailpiece.

Article number	Size	Size tube	Kvs	Unit
1196SN38X	3/8"	1/2"	1,5	10
1196SN12	1/2"	1/2"	1,5	10
1196UMSN38X*	3/8"	1/2"	1,5	10
1196UMSN12*	1/2"	1/2"	1,5	10


Thermostat adaptable valve 178SN

Nickel-plated thermostat adaptable valve. Angle body. Connection for iron pipe. Standard tailpiece. ABS hand wheel with movable stem. Compatible with thermostatic actuators series 148 and electrothermic actuators 22C. * Available with O-ring sealed straight tailpiece.

Article number	Size	Kvs	Unit
178SN38	3/8"	2,1	10
178SN12	1/2"	2,6	10
178SN34	3/4"	3,3	10
178UMSN38*	3/8"	2,1	10
178UMSN12*	1/2"	2,6	10
178UMSN34	3/4"	3,3	10


Thermostat adaptable valve with presetting 188UM

Nickel-plated thermostat adaptable valve with presetting. Angle body. Connection for iron pipe. Standard tailpiece. ABS hand wheel with fixed stem. Compatible with thermostatic actuators series 148 and electrothermic actuators 22C.

Article number	Size	Kvs	Unit
188UMSN38	3/8"	2,1	10
188UMSN12	1/2"	2,6	10
188UMSN34	3/4"	3,3	10

THERMOSTAT ADAPTABLE VALVE AND LOCKSHIELD VALVE

**Thermostat adaptable valve 130SN**

Nickel-plated thermostat adaptable valve. Angle body. Connection for iron pipe. Standard tailpiece. ABS hand wheel with movable stem. With easily removable protective cap to allow installation of thermal commands series 148 and electrothermic actuators 22C. * Available with O-ring sealed straight tailpiece.

Article number	Size	Kvs	Unit
130SN38	3/8"	2,1	10
130SN12	1/2"	2,6	10
130SN34	3/4"	3,3	10
130UMSN38*	3/8"	2,1	10
130UMSN12*	1/2"	2,6	10
130UMSN34*	3/4"	3,3	10

**Balancing lockshield valve 195SN**

Nickel-plated balancing lockshield valve. Angle body. Connection for iron pipe. Standard tailpiece. ABS cap. * Available with O-ring sealed straight tailpiece.

Article number	Size	Kvs	Unit
195SN38	3/8"	1,8	10
195SN12	1/2"	2,3	10
195SN34	3/4"	4,6	10
195UMSN38*	3/8"	1,8	10
195UMSN12*	1/2"	2,3	10
195UMSN34*	3/4"	4,6	10

**Thermostat adaptable valve 179SN**

Nickel-plated thermostat adaptable valve. Straight body. Connection for iron pipe. Standard tailpiece. ABS hand wheel with movable stem. Compatible with thermostatic actuators series 148 and electrothermic actuators 22C. * Available with O-ring sealed straight tailpiece.

Article number	Size	Kvs	Unit
179SN38	3/8"	1,1	10
179SN12	1/2"	1,8	10
179SN34	3/4"	2,6	10
178UMSN38*	3/8"	1,1	10
178UMSN12*	1/2"	1,8	10
178UMSN34*	3/4"	2,6	10

**Thermostat adaptable valve with presetting 189UM**

Nickel-plated thermostat adaptable valve with presetting. Straight body. Connection for iron pipe. Standard tailpiece. ABS hand wheel with fixed stem. Compatible with thermostatic actuators series 148 and electrothermic actuators 22C.

Article number	Size	Kvs	Unit
189UMSN38	3/8"	1,1	10
189UMSN12	1/2"	1,8	10
189UMSN34	3/4"	2,6	10

THERMOSTAT ADAPTABLE VALVE AND LOCKSHIELD VALVE

Thermostat adaptable valve 131SN

Nickel-plated thermostat adaptable valve. Straight body. Connection for iron pipe. Standard tailpiece. ABS hand wheel with movable stem. With easily removable protective cap to allow installation of thermal commands series 148 and electrothermic actuators 22C. * Available with O-ring sealed straight tailpiece.

Article number	Size	Kvs	Unit
131SN38	3/8"	1,1	10
131SN12	1/2"	1,8	10
131SN34	3/4"	2,6	10
131UMSN38*	3/8"	1,1	10
131UMSN12*	1/2"	1,8	10
131UMSN34*	3/4"	2,6	10


Balancing lockshield valve 196SN

Nickel-plated balancing lockshield valve. Straight body. Connection for iron pipe. Standard tailpiece. ABS cap. * Available with O-ring sealed straight tailpiece.

Article number	Size	Kvs	Unit
196SN38	3/8"	1,1	10
196SN12	1/2"	1,5	10
196SN34	3/4"	3,5	10
196UMSN38*	3/8"	1,1	10
196UMSN12*	1/2"	1,5	10
196UMSN34*	3/4"	3,5	10

4-WAY TWO-PIPE AND ONE-PIPE THERMOSTAT ADAPTABLE VALVE

**4-way thermostat adaptable valve 120B**

4-way nickel-plated thermostat adaptable valve for two-pipe systems. With presetting. Built-in lockshield valve. Connection for copper or plastic pipe. O-ring sealed straight tailpiece, complete with flow separation probe. ABS hand wheel. Differential pressure (item 148): 1,5 bar. Kvn coefficient with 2K proportional band: DN 1/2"= 0,58 - DN 3/4"= 0,62. Compatible with thermostatic actuators series 148 and electrothermic actuators 22C.

Article number	Size	Size tube	Kvs	Unit
120B12AM12	1/2"	1/2"	0,82	2
120B12AM34	3/4"	1/2"	0,93	2
120B24AM12	1/2"	1/2" S	0,82	2
120B24AM34	3/4"	1/2" S	0,93	2

**4-way thermostat adaptable valve 102M**

4-way nickel-plated thermostat adaptable valve for one-pipe systems with fixed by-pass. With presetting. Built-in lockshield valve. Connection for copper or plastic pipe. O-ring sealed straight tailpiece, complete with flow separation probe. ABS hand wheel. Differential pressure (item 148): 1,5 bar. Kvn coefficient with 2K proportional band: DN 1/2"= 1,76 - DN 3/4"= 1,84. Flow rate to radiator: 50%. Compatible with thermostatic actuators series 148 and electrothermic actuators 22C.

Article number	Size	Size tube	Kvs	Unit
102M12AM12	1/2"	1/2"	2	2
102M12AM34	3/4"	1/2"	2,15	2
102M24AM12	1/2"	1/2" S	2	2
102M24AM34	3/4"	1/2" S	2,15	2

4-way thermostat adaptable valves

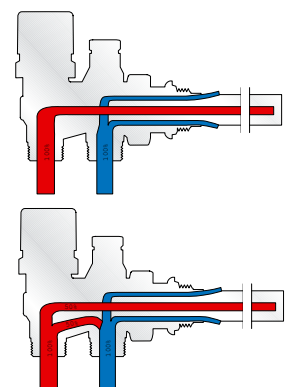
The 4-way valves incorporate, in just one piece, the different valve and lockshield functions. For the thermostat function, connect the delivery port to the connection under the head.

For two-pipe systems

Valves type 120B (without by-pass) allow building two-pipe heating systems where, for reasons of style or installation, it is preferable to keep just one connection point (at the bottom) to the radiator with consequent less masonry work and quicker installation.

For one-pipe systems

Valves Type 100M and 102M allow distribution of the water flow calculated for the entire ring into a part reserved for the heat exchange and into a part leading towards the next radiator. This permanently open by-pass allows constant recirculation of the heat carrier fluid when the valve is closed.



4-WAY TWO-PIPE AND ONE-PIPE THERMOSTAT ADAPTABLE VALVE

4-way diverter valve 126CB

4-way nickel-plated diverter valve for two-pipe systems, complete with nut and ring dia. 15 for nickel-plated pipe series 125. Floor connections. Can be used on radiators where there is no space for the flow separator probe.

Kvn coefficient with 1K proportional band: 0,37

Kvn coefficient with 2K proportional band: 0,61

Article number	Size	Size tube	Unit
126C1215B	1/2"	1/2"	10
126C2415B	1/2"	1/2" S	10


4-way diverter valve 126PB

4-way nickel-plated diverter valve for two-pipe systems, complete with nut and ring dia. 15 for nickel-plated pipe series 125. Wall connections. Can be used on radiators where there is no space for the flow separator probe.

Kvn coefficient with 1K proportional band: 0,37

Kvn coefficient with 2K proportional band: 0,61

Article number	Size	Size tube	Unit
126P1215B	1/2"	1/2"	10
126P2415B	1/2"	1/2" S	10

4-WAY DIVERTER VALVE AND REVERSE THERMOSTAT ADAPTABLE VALVE

**4-way diverter valve 126PB**

4-way nickel-plated diverter valve for two-pipe systems, complete with nut and ring dia. 15 for nickel-plated pipe series 125. Wall connections. Can be used on radiators where there is no space for the flow separator probe.

Kvn coefficient with 1K proportional band: 0,37

Kvn coefficient with 2K proportional band: 0,61

Article number	Size	Size tube	Unit
126P1215B	1/2"	1/2"	10
126P2415B	1/2"	1/2" S	10

**4-way diverter valve 126CM**

4-way nickel-plated diverter valve for one-pipe systems, complete with nut and ring dia. 15 for nickel-plated pipe series 125. Floor connections. Can be used on radiators where there is no space for the flow separator probe.

Kvn coefficient with 1K proportional band: 1,56

Kvn coefficient with 2K proportional band: 1,71

Article number	Size	Size tube	Unit
126C1215M	1/2"	1/2"	10
126C2415M	1/2"	1/2" S	10

**4-way diverter valve 126PM**

4-way nickel-plated diverter valve for one-pipe systems, complete with nut and ring dia. 15 for nickel-plated pipe series 125. Wall connections. Can be used on radiators where there is no space for the flow separator probe.

Kvn coefficient with 1K proportional band: 1,56

Kvn coefficient with 2K proportional band: 1,71

Article number	Size	Size tube	Unit
126P1215M	1/2"	1/2"	10
126P2415M	1/2"	1/2" S	10

**Nickel-plated copper pipe 125**

Nickel-plated copper pipe dia. 15 for connection of diverter valves.

Article number	Dimension	Unit
12560015	60 cm	10
12580015	80 cm	10
12590015	90 cm	10
125110015	110 cm	10

**Thermostat adaptable valve with presetting 1180M**

Nickel-plated thermostat adaptable valve. With presetting. Reverse body. Connection for copper or plastic pipe, size 1/2" M complete with nut and ring for pipe size 15. ABS hand wheel. Compatible with thermostatic actuators series 148 and electrothermic actuators series 22C.

Article number	Size	Size tube	Kvs	Unit
1180MN1215	1/2"	1/2"	1,4	10

4-WAY DIVERTER VALVE AND REVERSE THERMOSTAT ADAPTABLE VALVE

Thermostat adaptable valve with presetting 180M

Nickel-plated thermostat adaptable valve with presetting. Reverse body. Connection for iron pipe, size 1/2" M complete with nut and ring for pipe dia. 15. ABS hand wheel. Compatible with thermostatic actuators series 148 and electrothermic actuators 22C.

Article number	Size	Kvs	Unit
180MN12	1/2"	1,4	10


Thermostat adaptable valve with presetting 1134M

Nickel-plated thermostat adaptable valve. With presetting. Reverse body. Connection for copper or plastic pipe, size 1/2" M complete with nut and ring for pipe size 15. ABS hand wheel. With easily removable protective cap to allow installation of thermal commands series 148 and electrothermic actuators series 22C.

Article number	Size	Size tube	Kvs	Unit
1134MN1215	1/2"	1/2"	1,4	10


Thermostat adaptable valve with presetting 134M

Nickel-plated thermostat adaptable valve. With presetting. Reverse body. Connection for iron pipe, size 1/2" M complete with nut and ring for pipe size 15. ABS hand wheel. With easily removable protective cap to allow installation of thermal commands series 148 and electrothermic actuators series 22C.

Article number	Size	Kvs	Unit
134MN12	1/2"	1,8	10

THERMOSTATIC AND ELECTROTHERMIC ACTUATOR

186

**Thermostatic actuator 148**

Thermostatic actuator with oil-filled sensitive element. Temperature limiting and locking device. ABS hand wheel. Graduated scale from: 0 to 5. Setting range: 0°C - 28°C. Anti-freeze position: 8°C. Max. differential pressure: 1,5 bar.
* Available in chrome-plated version.

Article number	Unit
148	10
148 CR*	10

**Thermostatic actuator with remote sensor 148SD**

Thermostatic actuator with oil-filled sensitive element with remote sensor. 2 m capillary tube. Temperature limiting and locking device. ABS hand wheel. Graduated scale from: 0 to 5. Setting range: 0°C - 28°C. Anti-freeze position: 8°C. Max. differential pressure: 1,5 bar.

Article number	Unit
148SD	1

**Thermostatic actuator with remote sensor 148CD**

Thermostatic actuator with oil-filled sensitive element with remote sensor. 2 m capillary tube. Temperature limiting and locking device. ABS hand wheel. Graduated scale from: 0 to 5. Setting range: 0°C - 28°C. Anti-freeze position: 8°C. Max. differential pressure: 1,0 bar.

Article number	Unit
148CD	1

**Adjustment protector 148GA**

Tamper-proof cover for thermostatic actuators series 148. Provision for limiting and locking temperature range on rivettable closing position. Complete with standard mounting screws and break-stem rivets.

Article number	Unit
148GA	1

**Thermostatic actuator with remote sensor 148SD2**

Thermostatic actuator with immersion remote sensor for adjust flow of heat carrier in relation to the temperature in radiant panel heating systems, with presence of a storage tank and for water-air heat exchangers. Setting range: 20°C ÷ 50°C and 20°C ÷ 70°C. Bulb length: 97 mm (20°C ÷ 50°C) - 66 mm (20°C ÷ 70°C). Bulb thickness: 12 mm. 2,5 m capillary tube.

Article number	Unit
148SD2050	1
148SD2070	1

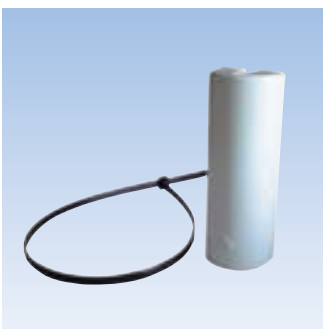
THERMOSTATIC AND ELECTROTHERMIC ACTUATOR



Sensor pocket 148SD12

Sensor pocket for actuator series 148SD2.
Threaded: 1/2" M. Sealing with O-ring.

Article number	Unit
148SD122050	10
148SD122070	10



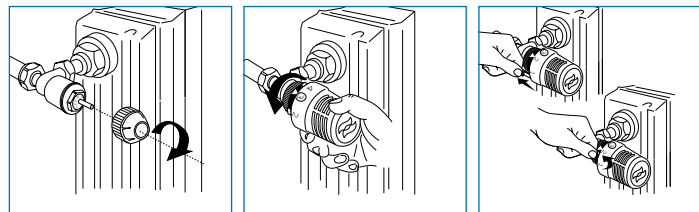
Insulating cover and string fixing 148SDCOP

Insulating cover and string fixing on each manifolds 20 - 50 and 20 - 70.

Article number	Unit
148SDCOP	10

Installation of thermostatic actuators series 148

- 1) Remove the manual hand wheel
- 2) Turn the thermostatic actuator fully open (position 5)
- 3) Approach the actuator to the valve body with the reference pointer clearly visible, then fully screw in the nickel-plated ring unit



Avoid vertical positions of the actuator; use the two setting blocks and position them to coincide with the required min./max. values.

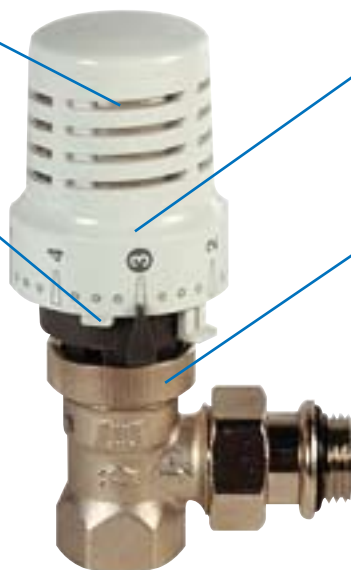
0	❄️	1	2	3	4	5
Closed	8 °C Anti-freeze	12 °C	16 °C	20 °C	24 °C	28 °C

Radial slots
high sensitivity in ambient temperature measurement

5 temperature levels
Quick and easy setting of the required temperature

Adjustment riders
Provision for adjusting or blocking the preset temperature range

Threaded ring nut
Practical and quick in installation operations



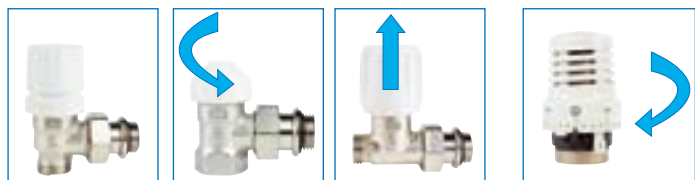
SCREW-IN THE RING NUT OF THE THERMOSTATIC ACTUATOR

Modern design
adaptable to any type of furnishing

EN215 Certified

UNSCREW

LIFT OUT



THERMOSTATIC AND ELECTROTHERMIC ACTUATOR



Electrothermic actuator 22C

Electrothermic actuator compact design with on/off action, compatible with thermostat adaptable radiator valves, valve for fan-coils and manifolds series 822MM. Cap made of flame retardant plastic. Chrome-plated brass threaded ring nut M30 x 1,5. Normally closed (NC). Normally open (NO). Stroke: 3,5 mm. With power cable: dia. 5,5 mm. Exempt from ENEC marking. Opening time: version 230 VAC 90 sec (start) - 3 min (end), version 24 VAC 3 min (start) - 5 min (end). Plug thrust: 140N (NC version) - 80N (NO version). Power consumption: 2,5 W. Inalterability range: 0°C / +50°C. Auxiliary contact load capacity: 700 mA. According to EEC 89/336, EEC 73/23, Italian Law 100/91. CEI-EN 55104/95, CEI-EN 55014/93C. Marking CE EN 60730-214. ENEC marking pending.

Article number	Power supply	Protection	Unit
22C230NC2-5	230 VAC	IP44	10
22C24NC2-5	24 VAC	IP44	10
22C230NA2-5	230 VAC	IP44	10
22C24NA2-5	24 VAC	IP44	10

MANUAL VALVE AND LOCKSHIELD



Manual valve 1163R

Nickel-plated manual valve. Angle body. Plug with soft seal. Connection for copper or plastic pipe, size 1/2" M. Taper tailpiece knurled to facilitate the hemp sealing operations. ABS hand wheel.

Article number	Size	Size tube	Unit
1163SN38XR	3/8"	1/2"	10
1163SN12R	1/2"	1/2"	10



Lockshield valve 1193R

Nickel-plated lockshield valve. Angle body. Plug with soft seal. Connection for copper or plastic pipe, size 1/2" M. Taper tailpiece knurled to facilitate the hemp sealing operations. ABS cap.

Article number	Size	Size tube	Unit
1193SN38XR	3/8"	1/2"	10
1193SN12R	1/2"	1/2"	10



Manual valve 1164R

Nickel-plated manual valve. Straight body. Plug with soft seal. Connection for copper or plastic pipe, size 1/2" M. Taper tailpiece knurled to facilitate the hemp sealing operations. ABS cap.

Article number	Size	Size tube	Unit
1164SN38XR	3/8"	1/2"	10
1164SN12R	1/2"	1/2"	10

MANUAL VALVE AND LOCKSHIELD


Lockshield valve 1194R

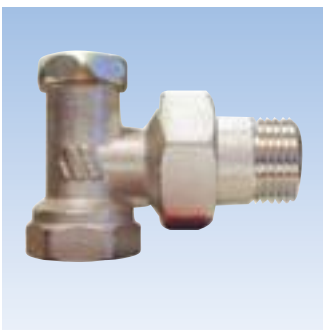
Nickel-plated lockshield valve. Straight body. Plug with soft seal. Connection for copper or plastic pipe, size 1/2" M. Taper tailpiece knurled to facilitate the hemp sealing operations. ABS cap.

Article number	Size	Size tube	Unit
1194SN38XR	3/8"	1/2"	10
1194SN12R	1/2"	1/2"	10


Manual valve 163R

Nickel-plated manual valve. Angle body. Plug with soft seal. Connection for iron pipe. Taper tailpiece knurled to facilitate the hemp sealing operations. ABS hand wheel.

Article number	Size	Unit
163SN38R	3/8"	10
163SN12R	1/2"	10


Lockshield valve 193R

Nickel-plated lockshield valve. Straight body. Plug with soft seal. Connection for iron pipe. Taper tailpiece knurled to facilitate the hemp sealing operations. ABS cap.

Article number	Size	Unit
193SN38R	3/8"	10
193SN12R	1/2"	10


Manual valve 164R

Nickel-plated manual valve. Straight body. Plug with soft seal. Connection for iron pipe. Taper tailpiece knurled to facilitate the hemp sealing operations. ABS cap.

Article number	Size	Unit
164SN38R	3/8"	10
164SN12R	1/2"	10


Lockshield valve 194R

Nickel-plated lockshield valve. Straight body. Plug with soft seal. Connection for iron pipe. Taper tailpiece knurled to facilitate the hemp sealing operations. ABS cap.

Article number	Size	Unit
194SN38R	3/8"	10
194SN12R	1/2"	10

MANUAL VALVE AND LOCKSHIELD

**Manual valve 190**

Nickel-plated manual valve. Angle body. Connection for iron pipe. Taper tailpiece. Knurled to facilitate the hemp sealing operations. Polypropylene hand wheel.

Article number	Size	Kvs	Unit
190SN1	1"	9,5	10
190SN114	1.1/4"	17,0	10

**Lockshield valve 195S**

Nickel-plated balancing lockshield valve. Angle body. Connection for iron pipe. Knurled to facilitate the hemp sealing operations. Taper tailpiece. ABS cap.

Article number	Size	Kvs	Unit
195SN1	1"	8,9	10
195SN114	1.1/4"	18	10

**Manual valve 191**

Nickel-plated manual valve. Straight body. Connection for iron pipe. Taper tailpiece. Knurled to facilitate the hemp sealing operations. Polypropylene hand wheel.

Article number	Size	Kvs	Unit
191SN1	1"	6,3	10
191SN114	1.1/4"	11,4	10

**Balancing lockshield 196S**

Nickel-plated balancing lockshield valve. Straight body. Connection for iron pipe. Knurled to facilitate the hemp sealing operations. Taper tailpiece. ABS cap.

Article number	Size	Kvs	Unit
196SN1	1"	6,4	10
196SN114	1.1/4"	11,6	10

SINGLE-PIPE MANUAL VALVE



4-way valve for one-pipe systems 119SX

Nickel-plated 4-way valve for one-pipe systems. Connection for copper or plastic pipe. Straight tailpiece complete with flow separation probe. Flow rate to radiator: 100%. ABS hand wheel.

Article number	Size	Size tube	Kvs	Unit
119S1212X	1/2"	1/2"	1,6	1
119S3412X	3/4"	1/2"	2,0	1
119SS1212SX	1/2"	1/2" S	1,6	1
119SS3412SX	3/4"	1/2" S	2,0	1



Bent probe RV141

Bent probe for 4 way valves. Series 119SX, 100M, 102M, 120B for radiant panels. Where there is no seating for the straight probe.

Article number	Size	Unit
RV14112	1/2"	10

ACCESSORIES AND SPARE PART



Wrench 223

Lockshield valve wrench for series 195, 196, 1195, 1196.
* Series 193, 194, 1193, 1194.

Article number	Size	Unit
2233812	3/8" - 1/2"	1
22334	3/4"	1
2238*	3/8"	1



Plastic singel-hole rose 808D

White plastic single-hole rose.

Article number	Dimension	Unit
808D10W	10 mm	25
808D12W	12 mm	25
808D15W	15 mm	25
808D18W	18 mm	25
808D22W	22 mm	25
808D28W	28 mm	25



Plastic double-hole rose 128

White plastic double-hole rose.

Article number	Dimension	Unit
12812W	12 mm	20
12816W	16 mm	20
12818W	18 mm	20



Plastic wall template 127

Plastic wall template, connection centre distance 35 mm.

Article number	Dimension	Unit
12712	12 mm	25
12716	16 mm	25
12718	18 mm	25



Staright tailpiece 234

Straight tailpiece with nickel-plated nut for valves and lockshields of UM series, with soft seal on radiator side and valve side.

Article number	Size	Unit
234USN38X	3/8"	10
234SN12	1/2"	10
234SN34	3/4"	10



Taper tailpiece knurled 2361

Taper tailpiece knurled for valves and lockshields.

Article number	Size	Unit
236138X	3/8"	10
236112	1/2"	10
236134	3/4"	10
236111	1"	10
2361114	1.1/4"	10



Nickel-plated nut 236

Nickel-plated nut for tailpiece 2361 and 2361C.

Article number	Size	Unit
2363858	3/8" (5/8")	10
23612	1/2"	10
23634	3/4"	10
2361	1"	10
236114	1.1/4"	10


Straight tailpiece 235

Straight tailpiece with nickel-plated nut and probe holder for 4-way one- and two-pipe valves.

Article number	Size	Unit
235SN3412	1/2"	10
235SN3434	3/4"	10
235SN341	1"	10


Flow separation probe RV140

Flow separation probe for 4-way 119S, 100M, 102M and 120B.

Article number	Size	Unit
RV14010	1/2"	10
RV14014	3/4"	10


White cap RV130

White cap for thermostat adaptable valves series 1130M, 1131UM, 130UM, 131UM, 1134M, 134M, 100M and fan-coil valves series 2131, 3131, 4131.

Article number	Unit
RV130-131	10


Hand wheel RV119

Hand wheel for one-pipe valves series 119SX and 119SP.

Article number	Unit
RV119B	10


Thermostatic valve insert RP130

Plug assembly for thermostatic and thermostat adaptable valves.

Article number	Size	Unit
RP130	M22 x 1,5	1

ACCESSORIES AND SPARE PART



White hand wheel RV178

White hand wheel for thermostat adaptable valves series 178U, 179U, 1178U, 1179U, 120B, 102M.

Article number	Unit
RV178	10



White hand wheel RV188

White hand wheel for thermostat adaptable valves series 188UM, 189UM, 1188UM, 1189UM.

Article number	Unit
RV188-189W	10



White hand wheel RV190

White hand wheel for manual valves series 190, 191.

Article number	Size	Unit
RV1901	1"	5
RV190114	1.1/4"	5



White cap RV195

White cap for lockshield valves series 195, 196, 1195, 1196.

Article number	Size	Unit
RV195B	3/8" - 1/2"	10
RV19534B	3/4"	10
RV1951	1"	5
RV195114	1.1/4"	5



White hand wheel VO

White hand wheel for manual valves series 1163R, 1164R, 163R, 164R.

Article number	Size	Unit
VOWATTS3812	3/8" - 1/2"	10